

# Delco Dems Committee Member Guide

## Office Contact

Phone: (610) 566-6427  
Email: james@delcodems.com  
Address: 104 Gayley St | Media, PA 19036  
Website: delcodems.com



Colleen Guiney, Chair  
Dan Muroff, First Vice Chair  
Rep Gina H Curry, Bill Clinton Vice Chairs  
Trisha Hall, Solicitor  
Donna Cantor, Assistant Solicitor  
TJ DeLuca, Secretary  
Michael Power, Treasurer

## The Basics

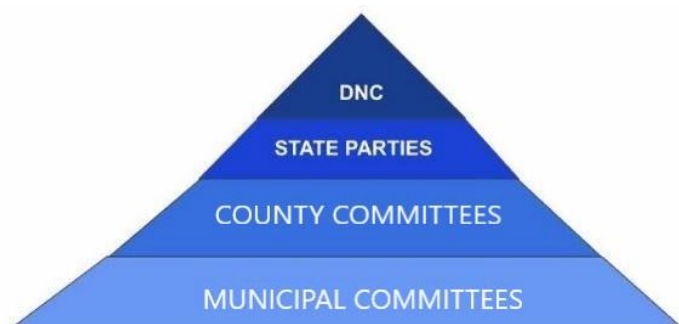
### The Democratic Party



Our platform includes:

- Equal opportunity for ALL citizens
- Restoring and strengthening our democracy
- Ensuring ballot access for all eligible voters in free and fair elections
- Building a stronger, fairer economy
- Achieving universal, affordable, quality healthcare
- Protecting communities and building trust by reforming our criminal justice system
- Providing a world class education in every zip code
- Achieving racial justice and equity
- Protecting ALL Americans civil rights, including LGBTQ+, Women, and Indigenous Peoples
- Combating the climate crisis and pursuing environmental justice
- Creating a 21st Century immigration system
- Ending the epidemic of gun violence
- Supporting freedom of the press
- Combating misinformation
- Building an effective, transparent government that is accountable to the American people

### Party Structure



The Democratic Party is structured in committee form at each level, starting at the top with the Democratic National Committee. The Pennsylvania Democratic Party is composed of a committee which charters the Delaware County Democratic Party. The Delaware County Democratic Committee is further broken down into 36 municipal committees. Our bylaws are posted on the Delco Dems website - Delcodems.com.

### Committee Structure

Democratic committees are made up of two members from each precinct. These members are elected every four years when the Governor is up for election during the primary. Additionally, two additional members per precinct may be appointed "At-Large". Municipal CM's elect the organization's leaders.

### Committee Member (CM) Qualifications

1. Registered Democrat
2. Resident of the voting district they'd like to represent
3. The desire to achieve Democratic ideals and promote Democratic candidates.

### What is a precinct?

A precinct is the smallest political unit in the country. You may also know it as a voting district. Each precinct reports to one polling place. Small, but mighty! An active committeeperson can be the difference in a handful of votes that decides an election!

# What can a committee member do?

Well, essentially, you are a steward of Democratic values in your neighborhood. You are the “go-to” person for elections and voting.

## Committee Member privileges

Whether elected or appointed, all committee people serve the same purpose: to get Democrats elected at the local, state, and national levels. CM's have certain rights as governed by county, state, and national Party bylaws:

- o Voting privileges for candidate endorsements at the local and County level
- o Voting privileges in municipal-level party business such as electing leadership, passing resolutions, and bylaws changes.

*“Together, we can solve the crises we're facing and win the battle for the soul of the nation.”  
President Joe Biden*

## Potential Committee Member Activities

Some responsibilities include:

- Attend party meetings, events, and activities
- Volunteer with the local party for things like staffing tables and registering voters at events, and helping cover polling places on Election Day
- Be a visibly proud Democrat: display your yard signs, placards, campaign buttons, bumper stickers, etc. loud and proud!
- Obtain the list of registered voters for your precinct and familiarize yourself with your neighbors and the geography of your precinct.
- Get to know your neighbors. Who are the Democrats? Who are the independents? Who is soon to be 18 and should get registered?
- Talk to your non-affiliated neighbors about how they can register as Democrats.
- Promote the Democratic Party and candidates on social media
- Help identify people to fill vacant committee spots

CM's serve as the main communication source between the Party and the current and future Democrats in their neighborhood.

In addition to being a Democratic leader in your precinct, you serve as an educator of elections for your neighbors.

Questions you might get:

- When's the next election?
- Who's on my ballot?
- Where's my polling place?

You don't need to know everything! One of the best parts of being a CM is having a network of people who want to help.

## Ways to be active during campaign season:

- o Obtain petition signatures to help get Democratic candidates on the ballot
- o Recruit volunteers to join you in turning out Democrats
- o Distribute Party and candidate literature door-to-door and/or virtual outreach
- o Help identify where Independent voters stand on Democrat candidates
- o Hold house parties for Democratic candidates
- o Volunteer with the Party or a candidate to help chase vote by mail ballots
- o Recommend poll workers for Election Day as needed

# Types of actions you can take to be an effective CM:

- Attend Delco Dems and PA Dems trainings for volunteers
- Host at least one social event/meeting with your municipal committee (to mobilize volunteers, promote Democrats and hold the GOP accountable)
- Participate in voter contact programs. (e.g., door-to-door canvass, phone banks, literature handouts, etc.)
- Coordinate on projects with your municipal committee.
- Create a precinct welcome program. (to contact new residents, new registrants and new citizens in your precinct)
- Register new Democratic voters. (Consider reaching out to your local High School to see if they have a program in place to register students to vote)
- Get involved online through social networking (Facebook, Twitter, Instagram)

*"Democracy works, America, but we gotta want it - not just during an election year, but all the days in between."  
-President Barack Obama*

**WWW.DelcoVotes!.com** is your one stop resource for most questions about elections.

**WWW.VOTE.PA.GOV** is also very useful. It is the Pennsylvania Department of State's website which includes lots of information about voting, including that year's election calendar. You can also register to vote, change your party, find your polling place, find important dates, and to apply for absentee or mail-in-voting (VBM).

## Helpful links:

Check voter **registration status**:

<https://www.vote.pa.gov/Register-to-Vote/Pages/Check-Your-Voter-Registration-Status.aspx>

**Apply** for mail-in: <https://www.vote.pa.gov/Voting-in-PA/Pages/Mail-and-Absentee-Ballot.aspx>

**Register** to vote: <https://www.vote.pa.gov/Register-to-Vote/Pages/How-to-Register-to-Vote.aspx>

# KNOW YOUR PRECINCT

It is helpful to know the boundaries of your precinct and its characteristics. As a CM, you may have access to Votebuilder to learn more about the voters in your precinct. You can use this space to help you keep track of the numbers and names.

**Delco Elections Office**  
 201 West Front Street  
 Media, Pennsylvania 19063  
 delcovotes!.com

Name		Ward (if applicable)		District (if applicable)
------	--	-------------------------	--	-----------------------------

<b>Precinct partners:</b>	
<b>Polling location:</b>	

## Voting Districts

<b>Congressional District</b>	PA -5	<b>State Legislative District</b>
<b>State Senatorial District</b>		<b>County Council</b>
<b>School Board</b>		

## Elected Officials

<b>US Senators</b>		
<b>Congressperson</b>		<b>State Representative</b>
<b>State Senator</b>		<b>County Councilperson</b>
Municipal electeds (Mayor, council people, supervisors, etc)		
<b>School Board Members</b>		

## Voters by the numbers

	Number	Percentage	Turnout in last election
<b>Democrats</b>			
<b>Republicans</b>			
<b>Independents/third-party voters</b>			

Total number of registered voters: \_\_\_\_\_